



BUD INVEST
MODULAR

SPIS TREŚCI

MiniQ	3
House „I”	5
House „I” double +	7
House „L”	9
House „V”	11
Family house.....	13
Garden SPA	15
Shop	17
Contact	19



A modern house design with a entresol
with a cozy and functional layout.

MINIQ



External dimensions:

length 542cm
width 312cm
height 385cm

Building area:

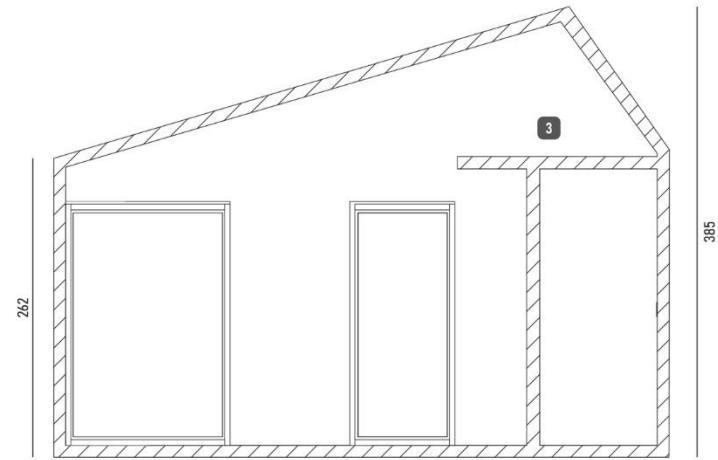
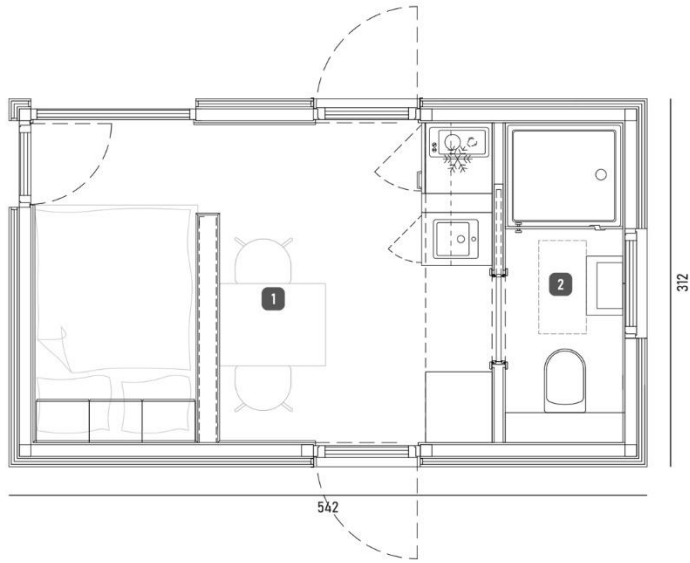
16,91m²

Total area:

17,35m²

Rooms:

1. Living area 10,45m²
2. Bathroom 2,46m²
3. Entresol 4,44m²

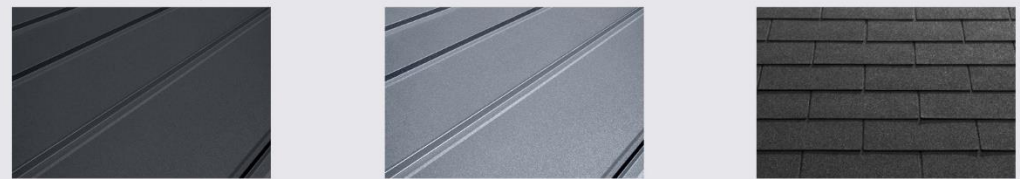


Facade finishing



cedar gray pine wenge palisander natural white plaster

Roof finishing



metal sheet anthracite metal sheet light grey bituminous shingle



A well-arranged and bright house,
perfect for rest not only in the summer season

1-2



External dimensions:

length 1075cm
width 350cm
height 392cm

Building area:

37,63m²

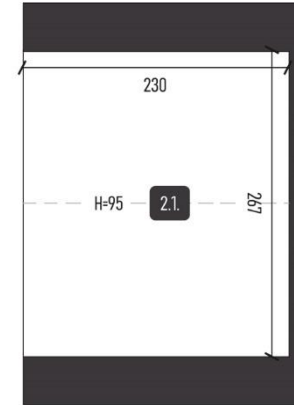
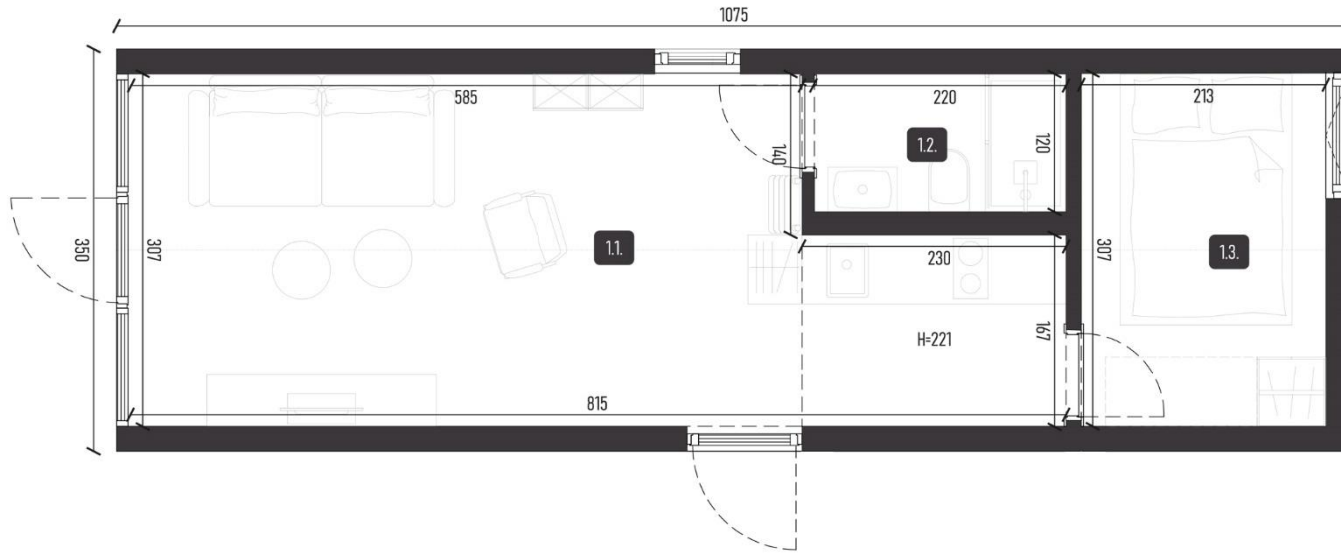


Total area:

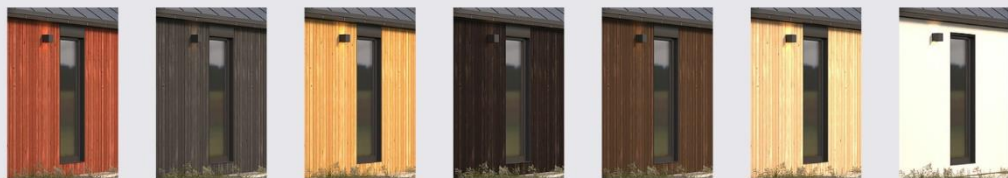
37,12m²

Rooms:

- 1.1. Living room + kitchenette 21,80m²
- 1.2. Bathroom 2,64m²
- 1.3. Room 6,54m²
- 2.1. Entresol 6,14m²

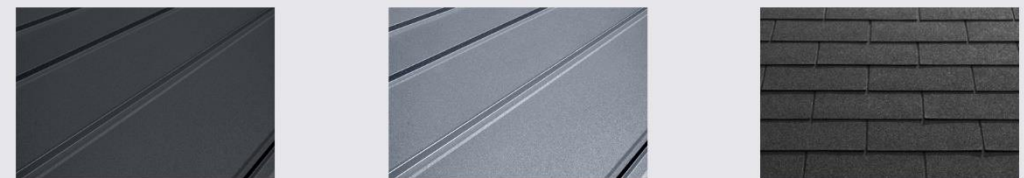


Facade finishing



cedar gray pine wenge palisander natural white plaster

Roof finishing



metal sheet anthracite metal sheet light grey bituminous shingle



A spacious and functional cottage that can accommodate up to 10 people. It has two bedrooms, two mezzanines, living room with kitchenette and bathroom.

1-2
double+



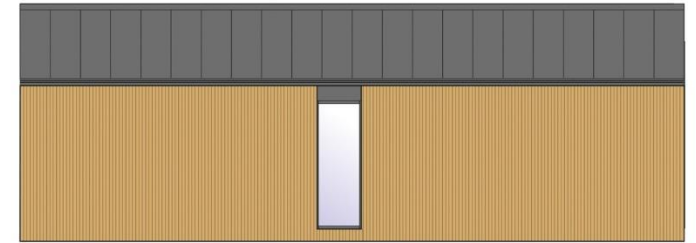
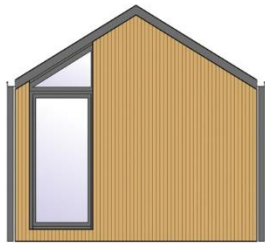
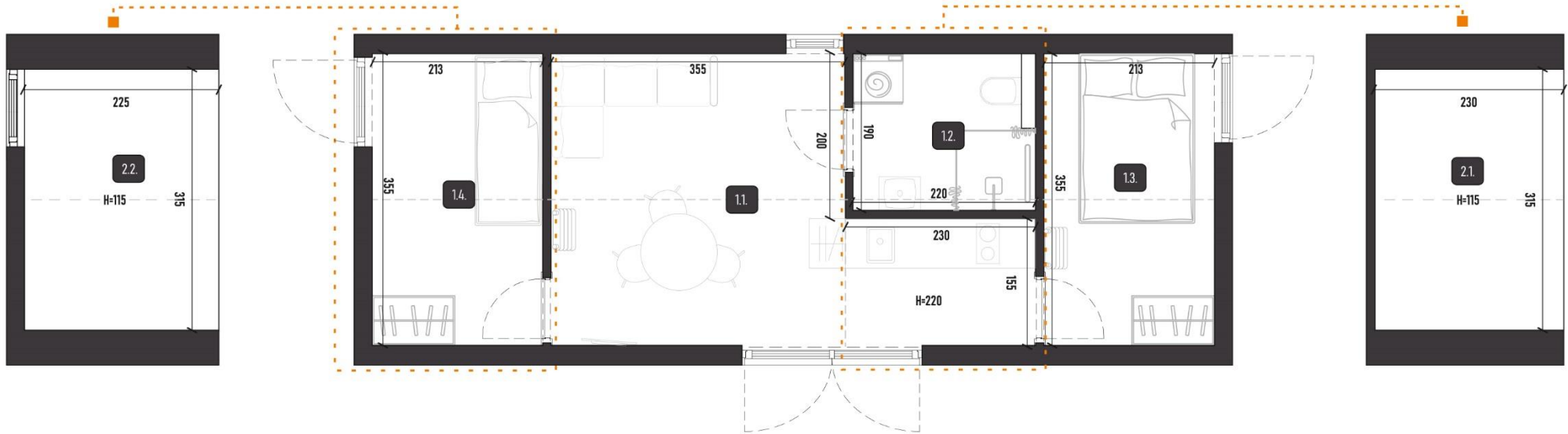
External dimensions:
 length 1085cm
 width 408cm
 height 392cm

Building area:
44,27m²



Total area:
49,81m²

Rooms:
 1.1. Living room + kitchenette 16,17m²
 1.2. Bathroom .. 4,18m² 1.3. Room .. 7,56m² 1.4. Room .. 7,56m²
 2.1. Entresol 7,25m² 2.2. Entresol 7,09m²

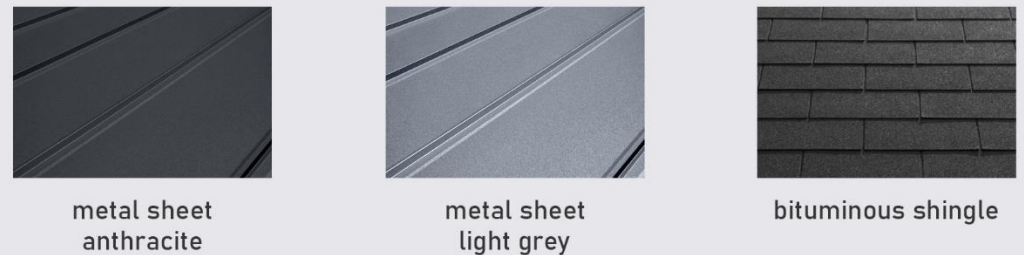


I-2 double+

Facade finishing



Roof finishing





A comfortable house. Has been designed with great attention to detail, great look and quality.

L37



BUD INVEST
MODULAR

External dimensions:

length 786cm
width 350cm
height 392cm

Building area:

38,34m²



Total area:

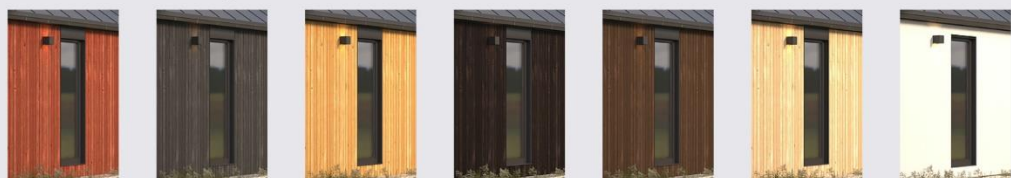
37,06m²

Rooms:

- 1. Living room 15,76m²
- 2. Kitchenette 3,73m²
- 3. Bathroom 2,56m²
- 4. Room 8,75m²
- 5. Entresol 6,26m²

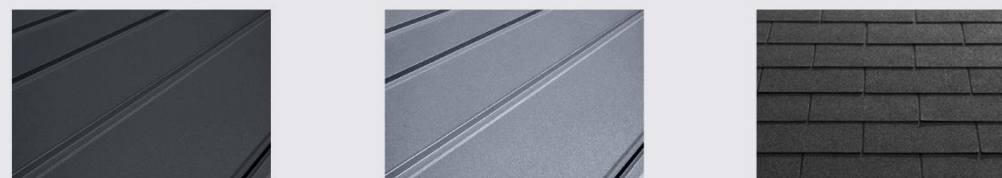


Facade finishing



cedar gray pine wenge palisander natural white plaster

Roof finishing



metal sheet anthracite metal sheet light grey bituminous shingle



V35 is a compact modular home design. Large glazing provides an optimal amount of natural light inside. An ideal proposition for a family of four.

V35

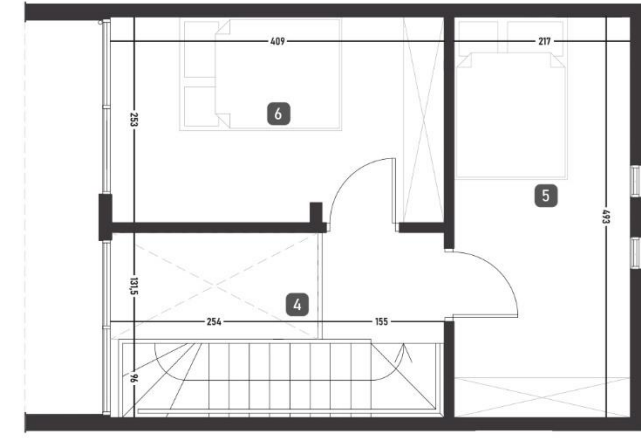
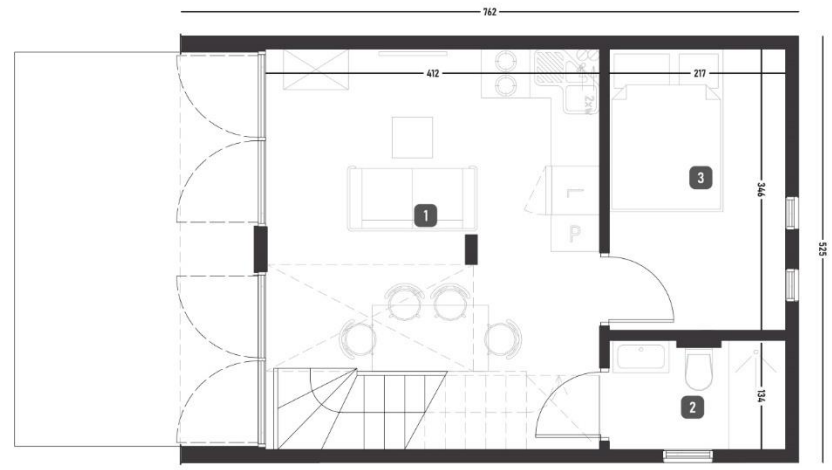


External dimensions:
 length 762cm
 width 525cm
 height 646cm

Building area:
40,01m²

Rooms:
 1. Living room+kitchenette ... 20,28m²
 2. Bathroom 2,91m²
 3. Room 7,51m²
 4. Corridor 2,02m²
 5. Room 10,70m²
 6. Room 10,36m²

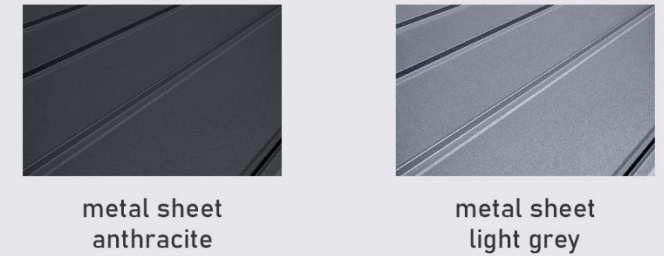
Total area: **53,78m²**



Facade finishing



Roof finishing





It is a house design that is perfectly suited for semi-detached and terraced houses.

family
houses



External dimensions:
 length 1100cm
 width 400cm
 height 680cm

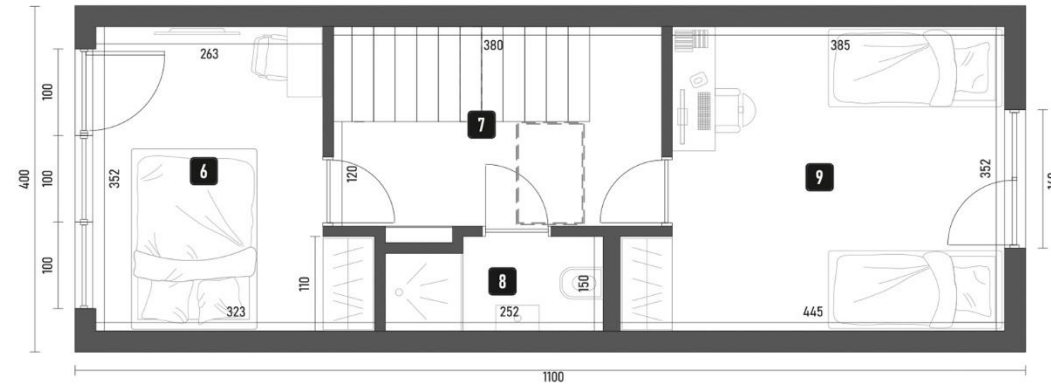
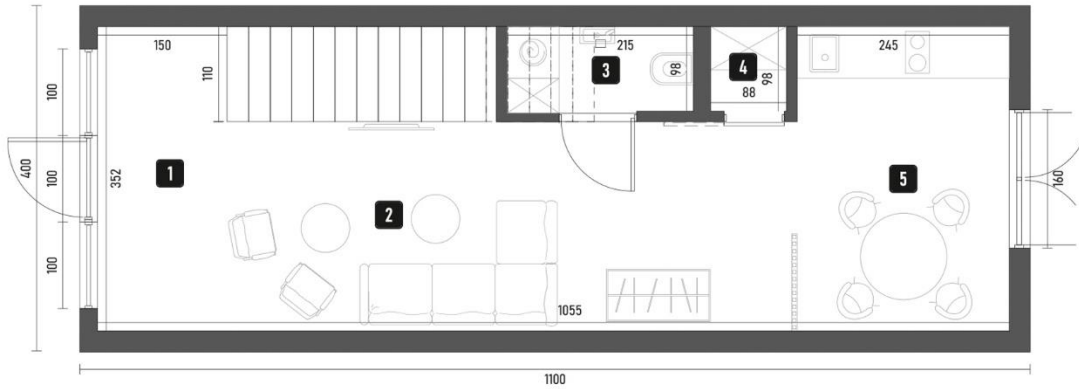
Building area:
44,00m²



Rooms: 1. Entrance + staircase ... 8,72m²
 2. Living room 15,97m²
 3. Toilet 2,11m²
 4. Utility room..... 0,86m²
 5. Kitchen 8,62m²

6. Bedroom 2,02m²
 7. Corridor 8,92m²
 8. Bathroom 3,24m²
 9. Bedroom 14,21m²

Total area: **72,57m²**



family
houses



Facade finishing



wenge



natural



natural



white
plaster



light grey
plaster

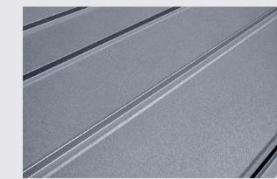


anthracite
plaster

Roof finishing



metal sheet, anthracite



metal sheet, light grey



Garden Spa is a unique facility for relaxation and rest. It is made of the highest quality products. It has a shower, sauna and space for any arrangement.

Garden SPA



External dimensions:

length 610cm
width 250cm
height 290cm

Building area:

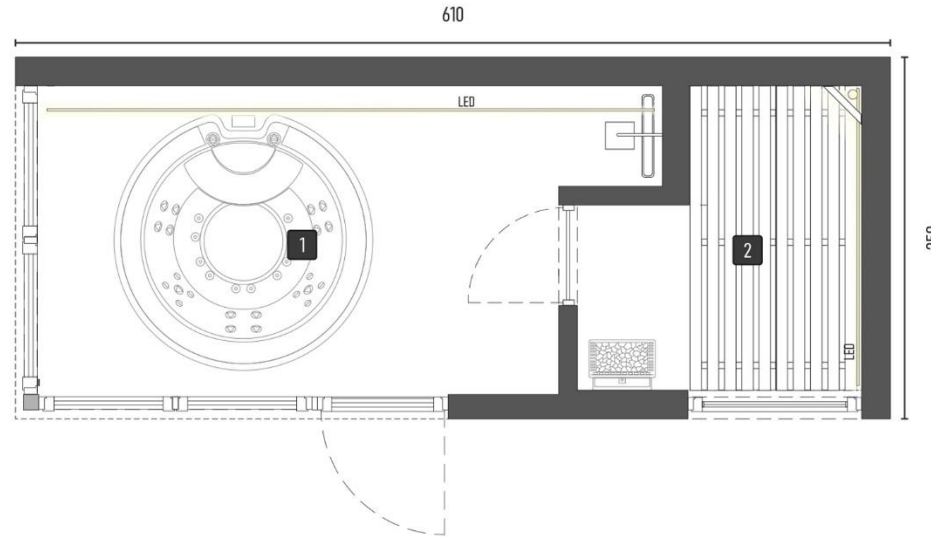
15,25m²

Total area:

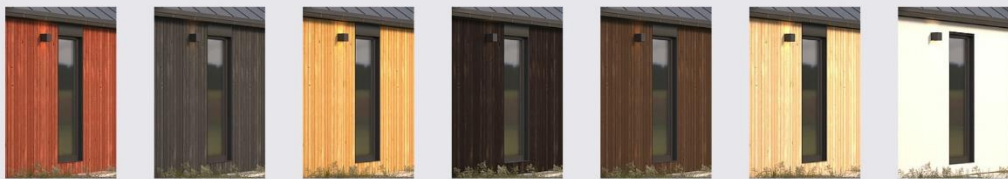
11,72m²

Rooms:

1. Jacuzzi 8,27m²
2. Sauna 3,45m²

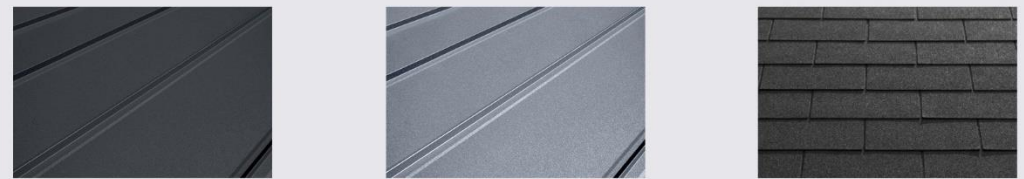


Facade finishing



cedar gray pine wenge palisander natural white plaster

Roof finishing



metal sheet anthracite metal sheet light grey bituminous shingle



Commercial and public use building.
For any arrangement according to customer needs.

Shop



External dimensions:

length 1400cm
 width 800cm
 height 385cm

Building area:

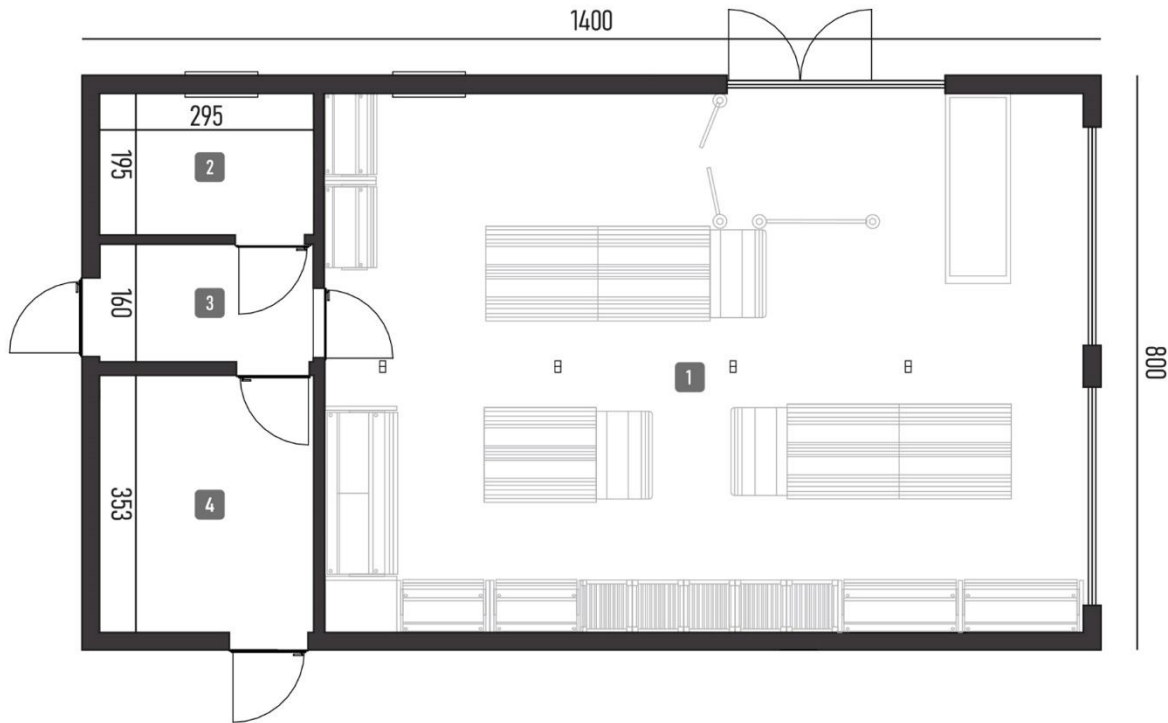
112,0m²

Total area:

98,73m²

Rooms:

- 1. Hall 77,85m²
- 2. Toilet 5,75m²
- 3. Corridor 4,72m²
- 4. Warehouse 10,41m²



Shop

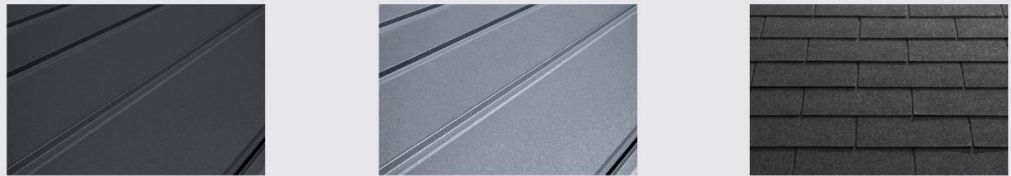


Facade finishing



cedar gray pine wenge palisander natural white plaster

Roof finishing



metal sheet anthracite metal sheet light grey bituminous shingle



BUD INVEST
MODULAR



Bud Invest

Dworcowa 12

83-110 Tczew



+48 668 680 796



agata.biennek@bud-invest.com