



A modern house design with a entresol
with a cozy and functional layout.

MINIQ



External dimensions:

length 542cm
width 312cm
height 385cm

Building area:

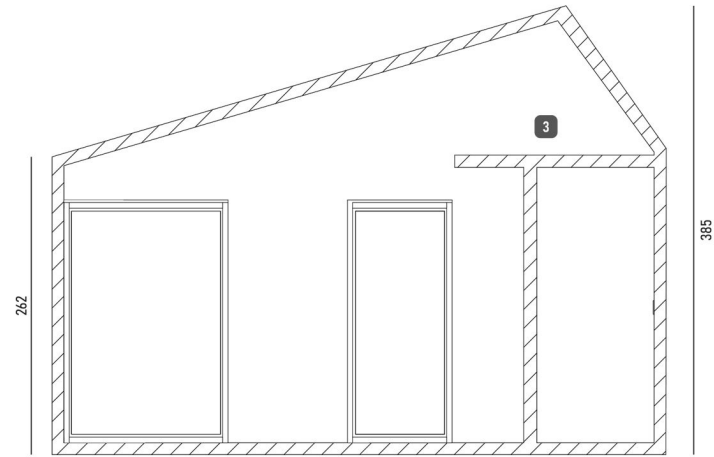
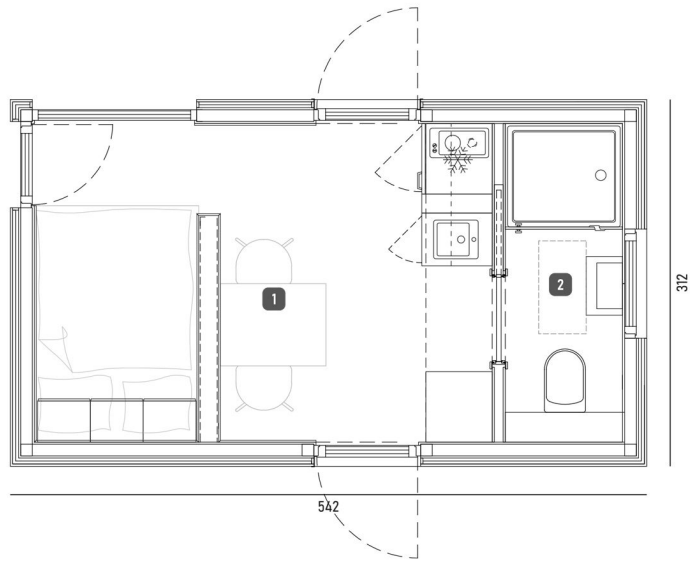
16,91m²

Total area:

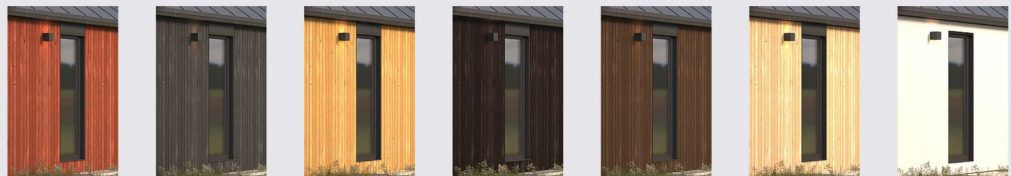
17,35m²

Rooms:

1. Living area 10,45m²
2. Bathroom 2,46m²
3. Entresol 4,44m²

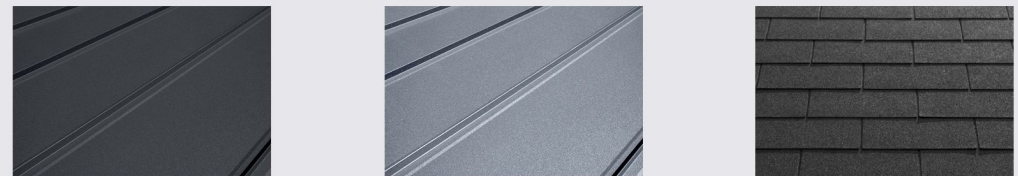


Facade finishing



cedar gray pine wenge palisander natural white plaster

Roof finishing



metal sheet anthracite metal sheet light grey bituminous shingle