



It is a house design that is perfectly suited for semi-detached and terraced houses.

family  
houses





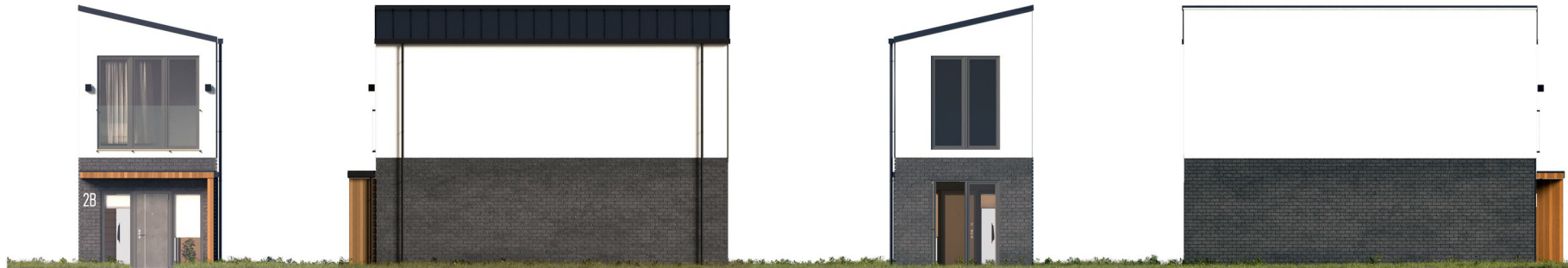
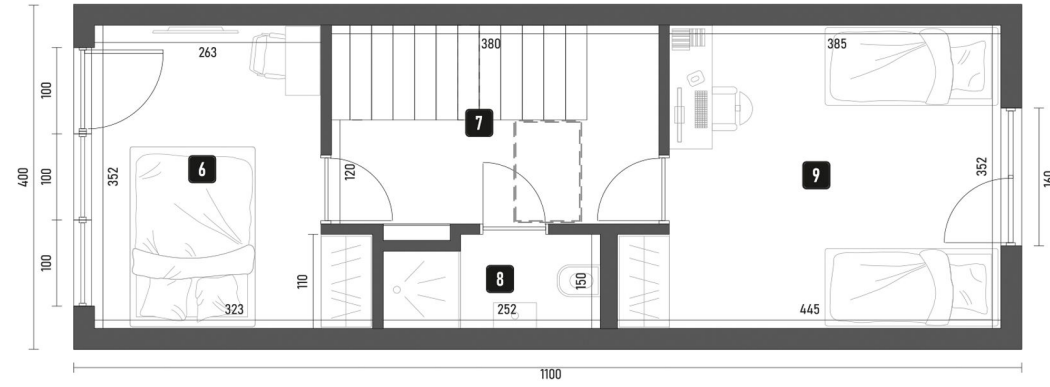
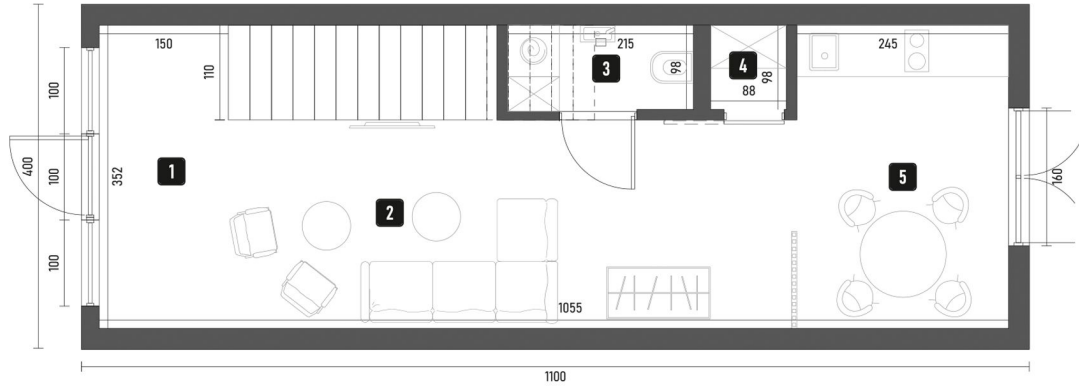
External dimensions:  
 length ..... 1100cm  
 width ..... 400cm  
 height ..... 680cm

Building area:  
**44,00m<sup>2</sup>**

Rooms: 1. Entrance + staircase ... 8,72m<sup>2</sup>  
 2. Living room ..... 15,97m<sup>2</sup>  
 3. Toilet ..... 2,11m<sup>2</sup>  
 4. Utility room..... 0,86m<sup>2</sup>  
 5. Kitchen ..... 8,62m<sup>2</sup>

6. Bedroom ..... 2,02m<sup>2</sup>  
 7. Corridor ..... 8,92m<sup>2</sup>  
 8. Bathroom ..... 3,24m<sup>2</sup>  
 9. Bedroom ..... 14,21m<sup>2</sup>

Total area: **72,57m<sup>2</sup>**



family  
houses



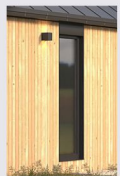
Facade finishing



wenge



natural



natural



white  
plaster



light grey  
plaster

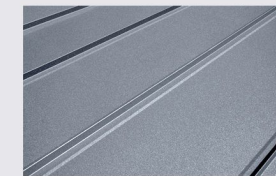


anthracite  
plaster

Roof finishing



metal sheet, anthracite



metal sheet, light grey