



Bud Invest Sp. z o.o., Dworcowa Street 12, 83-110 Tczew, Poland

tel.: +48 511 641 580

e-mail address: office@budinvest-modular.com

www.budinvest-modular.com

A strong brand
– Guaranteed safety

3

4

Modular building with Bud Invest
We will build your dreams

7

How do we work

8

House I - Option 1

10

House I - Option 2

12

House L - Option 1

14

House L - Option 2

16

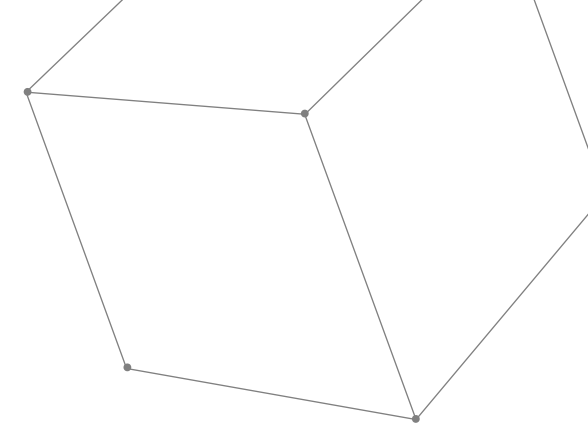
House V

18

Product specification

24

Contact



A STRONG BRAND

- safety guaranteed

We have co-created a Group, which for 15 years been constantly developing and have a leading position on the modular building market.

Close cooperation between our contractors, suppliers and dealers guarantees the highest standards of projects implementation.



MODULAR BUILDING

with **BUD INVEST**

We build your dreams.



ENLARGEMENTS

Bud Invest gives almost endless opportunities to create a made-to-measure project. You can decide to build from the scratch or to enlargement already existing building.



INFRASTRUCTURE UPGRADES



NEW, HIGH-CLASS BUILDINGS

Modular construction solutions give endless opportunities, which we apply in our customers projects.



COST SAVINGS

due to an independent production lines and simple setup



QUICK SETUP

from 8 weeks



ENVIRONMENTALLY FRIENDLY

based on innovative technological solutions



FLEXIBILITY

based on the steel frame structure



QUALITY CONTROL AND WARRANTY

up to 15 years



HIGH-CLASS DESIGN

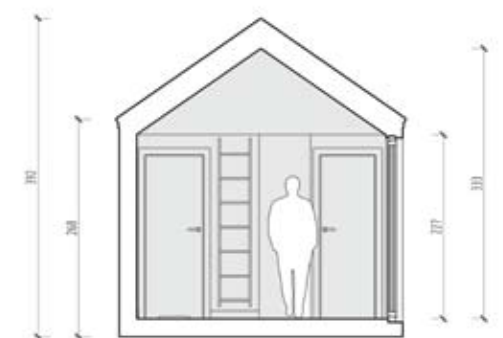
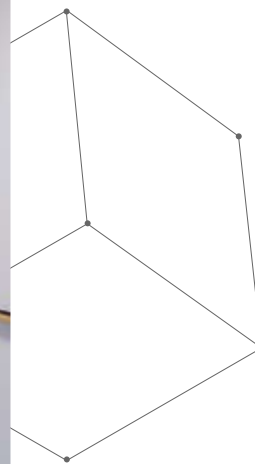
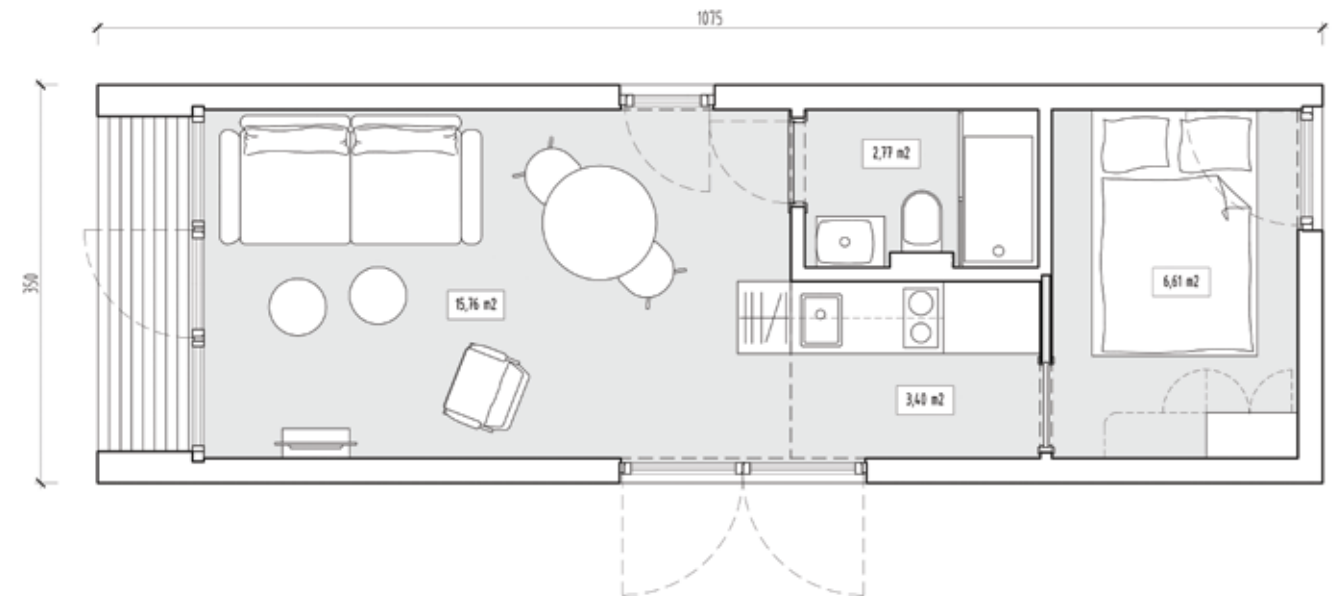


How do **WE WORK**

What makes us reliable, proved and flexible? It's simple. We cooperate with the best professionals on every step of the manufacturing process. We made every effort to put together a team of talented architects, engineers, constructors. For them nothing is impossible.

Option 1

This cozy cottage is extremely functional. Despite the small size it offers everything what you need- the lounge zone, kitchenette, bathroom with shower and a bright bedroom.

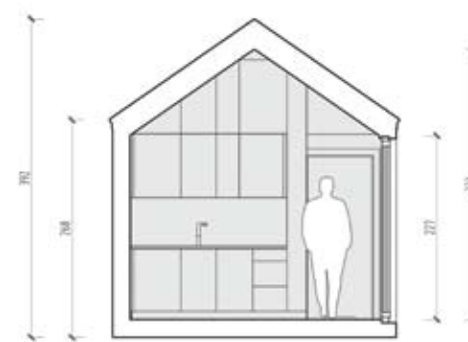
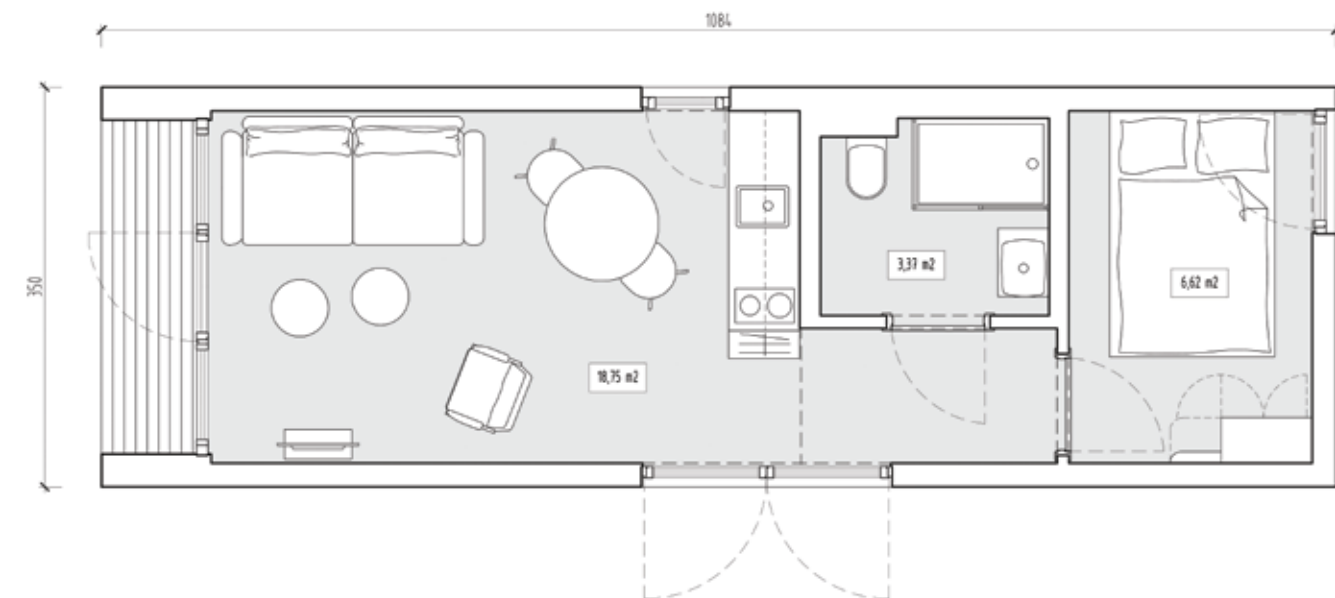


ROOM

AREA | m²

Living room	16.05 m²
Kitchenette	3.49 m²
Bathroom	2.87 m²
Bedroom	6.64 m²
Mezzanine - floor	5.47 m²
Loggia	2.34 m²

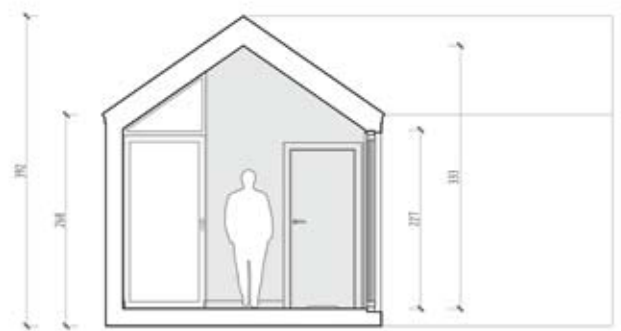
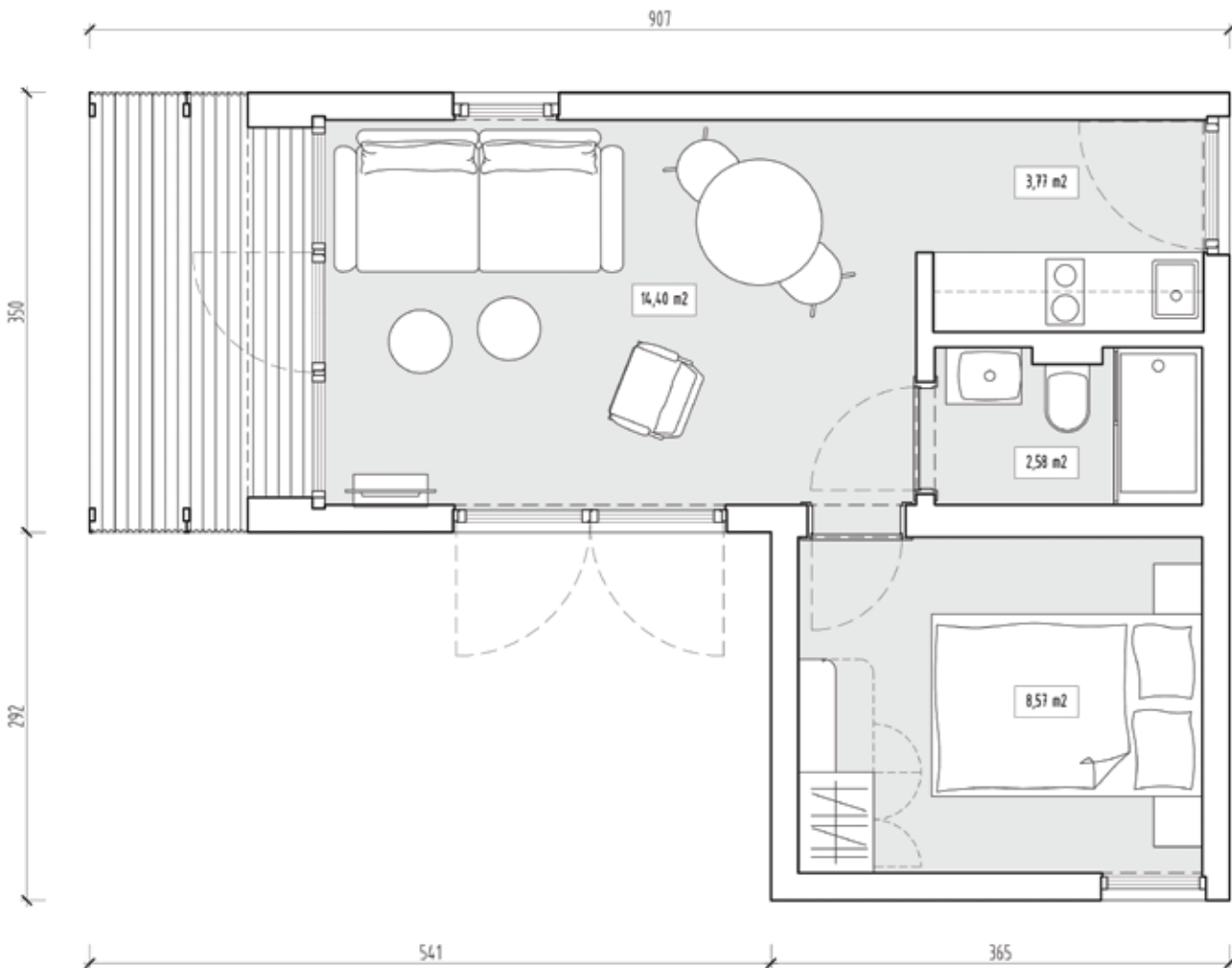
INTERIOR VISUALIZATIONS



ROOM	AREA m ²
Living room	11.80 m ²
Kitchenette	2.90 m ²
Bathroom	3.42m ²
Bedroom	6.61 m ²
Hall	4.35 m ²
Loggia	2.30 m ²
Technical space	2.00 m ²

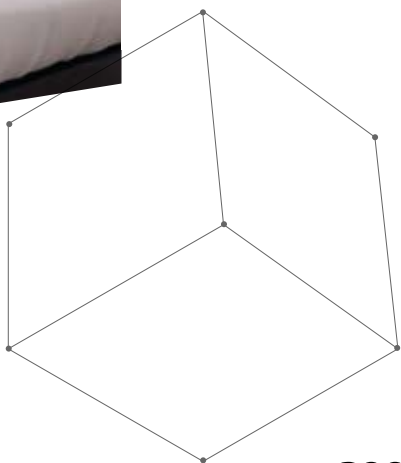
Option 2

Different arrangement?
Not a problem! Cottage I offers open
floor plan with kitchen in the living
room. The house is still functional,
and the bathroom is more spacious.



HOUSE Option 1

What would you say about a cottage in the L-shape layout? Despite the small size of this cottage carefully refined details and classy facilities makes it elegant and charming.



ROOM	AREA m²
Living room	14.60 m²
Kitchenette	3.80 m²
Bathroom	2.52 m²
Bedroom	8.71 m²
Loggia	5.60 m²
Technical space	2.50 m²

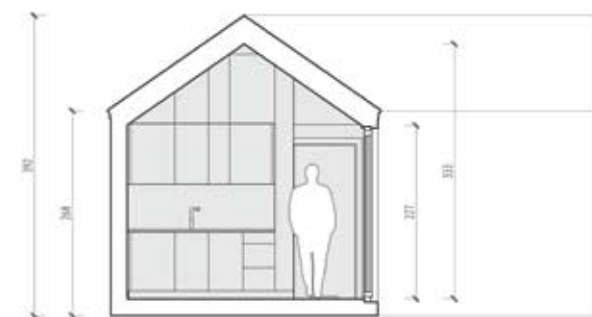
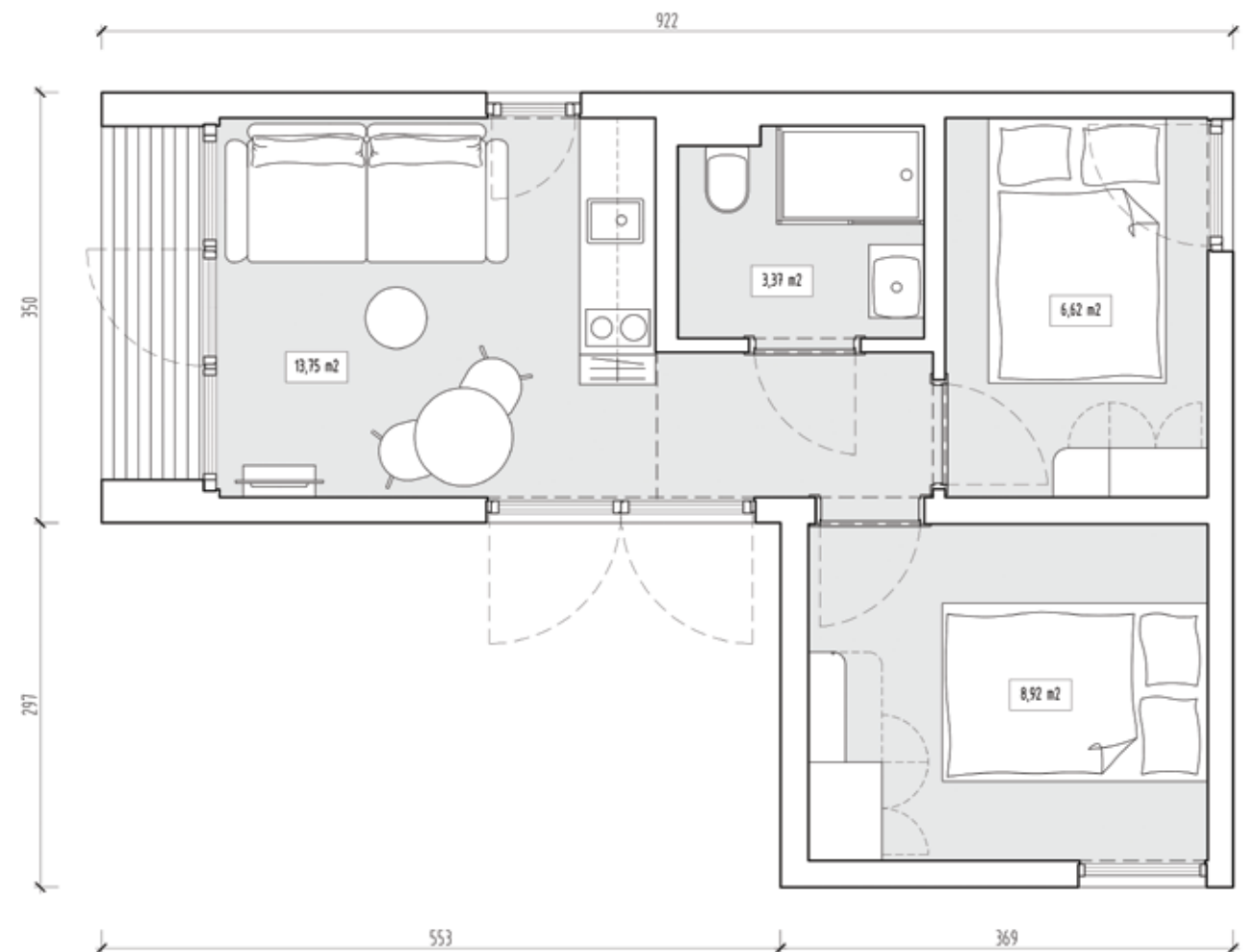
INTERIOR VISUALIZATIONS



HOUSE

L Option 2

Another L-shaped option is this house with two bedrooms. It is an ideal solution if you need additional sleeping space at the same size.



ROOM

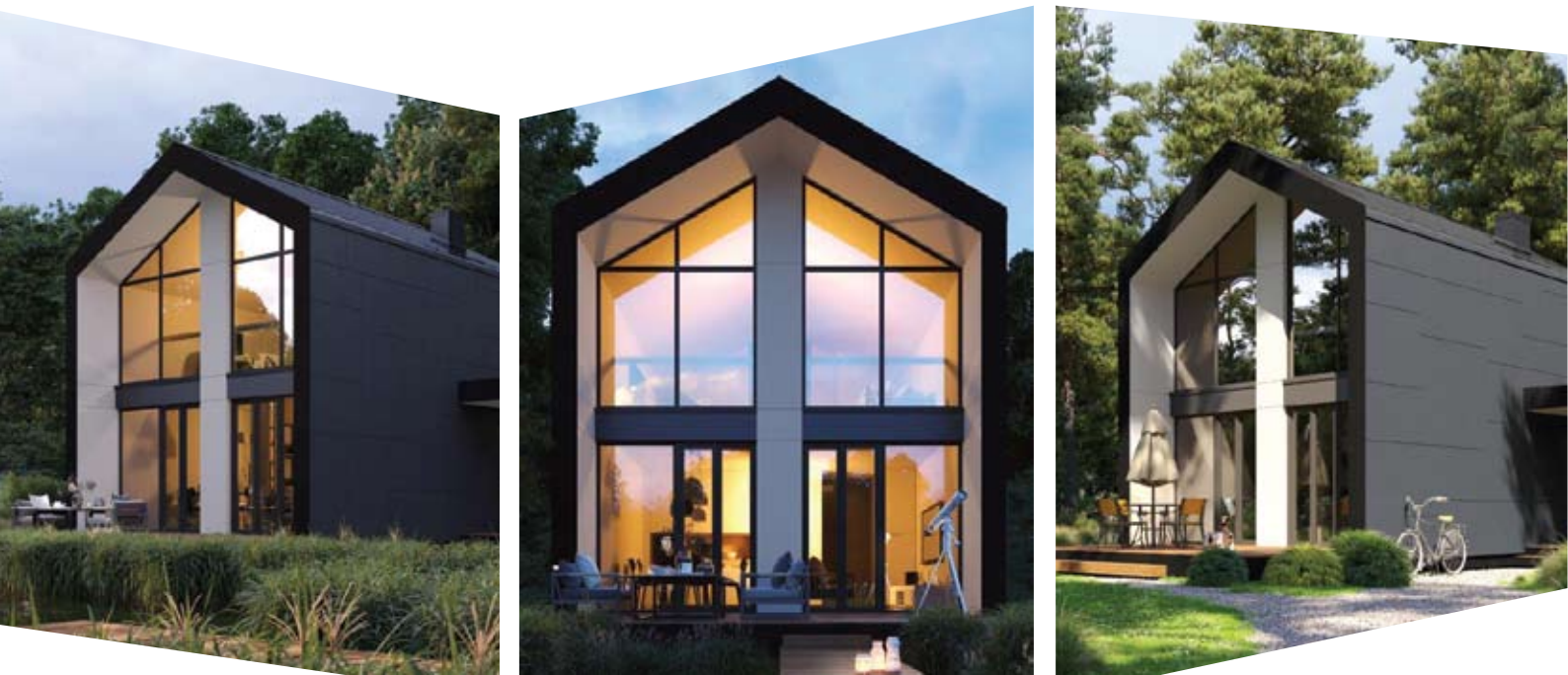
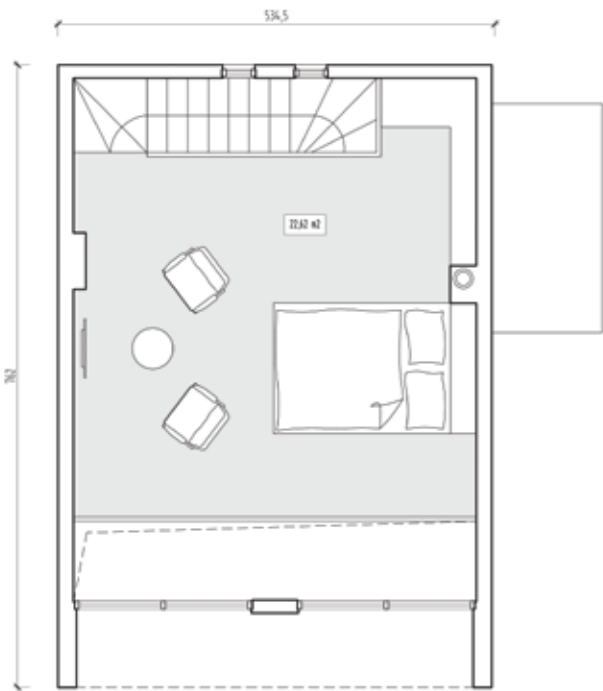
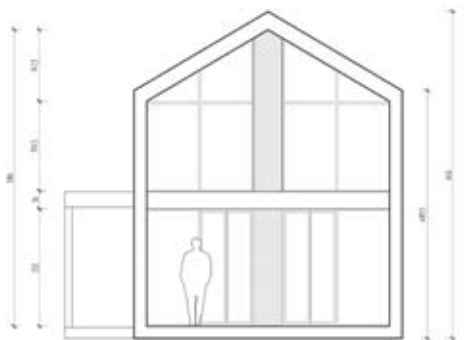
AREA | m²

Living room	9.46 m²
Kitchenette	2.60 m²
Bathroom	3.26 m²
Bedroom 1	6.61 m²
Bedroom 2	8.92 m²
Hall	1.70 m²
Loggia	2.30 m²
Technical space	2.00 m²



HOUSE V

This house is extraordinary. Thanks to the towering glazing this modern building gets elegant and light. The first floor is a living area, whereas a spacious bedroom is located on the mezzanine.



ROOM	AREA m²
Living room with a kitchenette	20.28 m²
Bathroom	4.42 m²
Bedroom	22.62 m²
Hall	3.93 m²
Mezzanine	22.62 m²
Loggia	Ask for more details

CONSTRUCTION

- S235J2 (PN-EN-10025) – steel plates
- S235J2H (PN-EN-10210) – hollow sections
- S235J2 (PN-EN-10025) – rolled sections
- S235J2H (PN-EN-10219) – cold formed hollow sections

Materials used have a B safety mark certificate or are certified to comply with PN or have Technical Approvals.

Anti-corrosion protection

Corrosivity category C2, durability H>15 years according to EN ISO 12944-5-2007. A set of industrial paints for corrosivity category have been used according to PN-EN-12944-5. Minimum coating thickness 120µm in a double coating system.

Indoor installations

- a) Sanitary: Water supply line made of multilayer PE-RT/Al/ PE-RT pipes in KAN-therm Press system. Water supply lines are in walls and floors. Warm water – prepared by 50 litre storage water heater. Plumbing vent and horizontal branches over the floor made of PVC pipes and fittings (PN-74/C-89200). Sewage connection – pipe 110 phi (diameter).
- b) Electric: Junction Box with a level of protection not lower than IP20. According to standard PN-IEC60439-1. Cables and electrical wires in tubing, skirting, with equipment. It is a complete installation system for minimum cable diameter (single phase) – YDY 3x1.5mm².
- c) Equipotential bonding system, grounding, type A, vertical grounding. Grounding made of steel tape Fe/Zn 20x3.

LIVE LOAD

- Evenly distributed live load
- Residential category – floor 2.00 kN/m².

Finishing materials

Wooden and wood-imitating finishing materials have been made non-flammable. They have a high level of moisture resistance Natural oil-based paints (linseed oil) have been used.

HEAT TRANSFER COEFFICIENT ‘U’ in compliance with WT 2021

Using an innovative thermal insulation system, we obtained the following values:

Floor (above the ground):
required: $U = 0.3 [W/(m^2 \cdot K)]$,
in our tiny houses: $U = 0.08 [W/ m^2 \cdot K]$,

Sloping roof:
required: $U = 0.15 [W / (m^2 \cdot K)]$,
in our tiny houses: $U = 0.039 [W/(m^2 \cdot K)]$,

External wall:
required: $U = 0.20 [W / (m^2 \cdot K)]$,
in our tiny houses: $U = 0.042 [W/(m^2 \cdot K)]$,

CLIMATE LOAD

– depending on the target location, designed for Northern Poland climate.

Facade

Facade board - Spruce- ROMB duo profile, impregnated with elements of panel sheet.

Roof

Roofing sheet or shingle.

Thermal insulation

Rock wool adjusted to the width of the compartment.

Window frames

- Warm PVC or aluminum window joinery
- Front door- glazed
- Interior doors- laminated, non-rebated with adjustable door frame

Internal partition walls

Dry construction with plasterboard system, reinforced with OSB where hanging cupboards are located.

Electrical installations

Electrical installations concealed, finished with equipment (sockets, switches) along with junction box – layout according to the project.

- Lighting – central, surface light source in every room
- Lighting – wall lamp by the bathroom mirror
- Lighting – under cabinet in the kitchen
- Outdoor lighting with a motion sensor

Teletechnical installations

- Antenna, socket in bedroom and living room
- Internet connection in a living room

Heating

Electric underfloor heating or electric heating – panel radiators.

Interior Surface finishes

Walls

- Living room, bedroom, kitchen – wooden boards or white (painted) plasterboard
- Bathroom – water resistant Scandinavian wall cladding covered with a layer of HPL or laminated and ceramic boards.

Ceilings

- Wooden boards or white (painted) plasterboard
- In technical areas: suspended ceilings, and OSB

Floor

Vinyl LVT floor panels or laminated flooring panels.

Sanitary systems

- Electric storage water heater – 50l
- Toilet drainage DN-110
- Shower drain DN-50
- Kitchen sink outlet DN -50
- Sink and washbasin drain trap DN-50 PE/PP
- Dishwasher drain – DN 50

Bathroom

- Furniture – cabinets – fronts| semi-matte varnish or wood imitating laminate (water heater cover).
- Wash basin cabinet with white, ceramic wash basin.
- Concealed WC frame with a white, ceramic toilet (with slow falling toilet seat) chrome flush plate.
- Polished chrome tap. Shower with shower base and chrome profiles, thermostat and rain shower head (chrome).
- Mirror, humidity sensing exhaust fan.

Kitchen

- Furniture – cupboards: laminated chipboard; laminated countertop, drawers with soft closing mechanism.
- Equipment: induction hob with 2 rings; integrated ventilation hood with LED, stainless steel (brushed) sink; undercounter, integrated fridge.

EXTRA OPTIONS (to choose from):

Structure

- Additional terrace
- Fibre-cement board on walls and roof
- Window frames – aluminium profiles, insulated, and warm
- External anti-burglary shutters

Electric installation

- USB sockets in chosen places (bedroom, living room).
- Lighting with dimming system and/or LED strip RGB with a choice of lighting colour

Kitchen

- Individually designed kitchen
- Fully-integrated dishwasher

Installations

- Heat pump
- HVAC Unit: cooling and heating / one unit for day zone: internal unit
- Wall-mounted and external
- Recuperator, mechanical ventilation with heat recovery
- Electric underfloor INFRARED heating, heating foil made of carbon fibre
- Photovoltaic systems
- Alarm installation
- Video surveillance /CCTV

Smart systems

- Intelligent remote system of controlling and monitoring the object.
- Door code handle with an access code.
- Keycard locks: front door secured with an electronic access code.

* control of lighting, heating, blinds, monitoring of over-current protection devices, control of ventilation/AC, central Energy supply disconnection, communication with superordinate controlling system through LAN.

INTERIOR FIT-OUT





Stable and experienced brand.



CONTACT



Bud Invest Sp. z o.o.

Dworcowa Street 12
83-110 Tczew, Poland



+48 511 641 580



e-mail: office@budinvest-modular.com



www.budinvest-modular.com



www.facebook.com/budinvestspzoo



www.linkedin.com/company/bud-investgroup